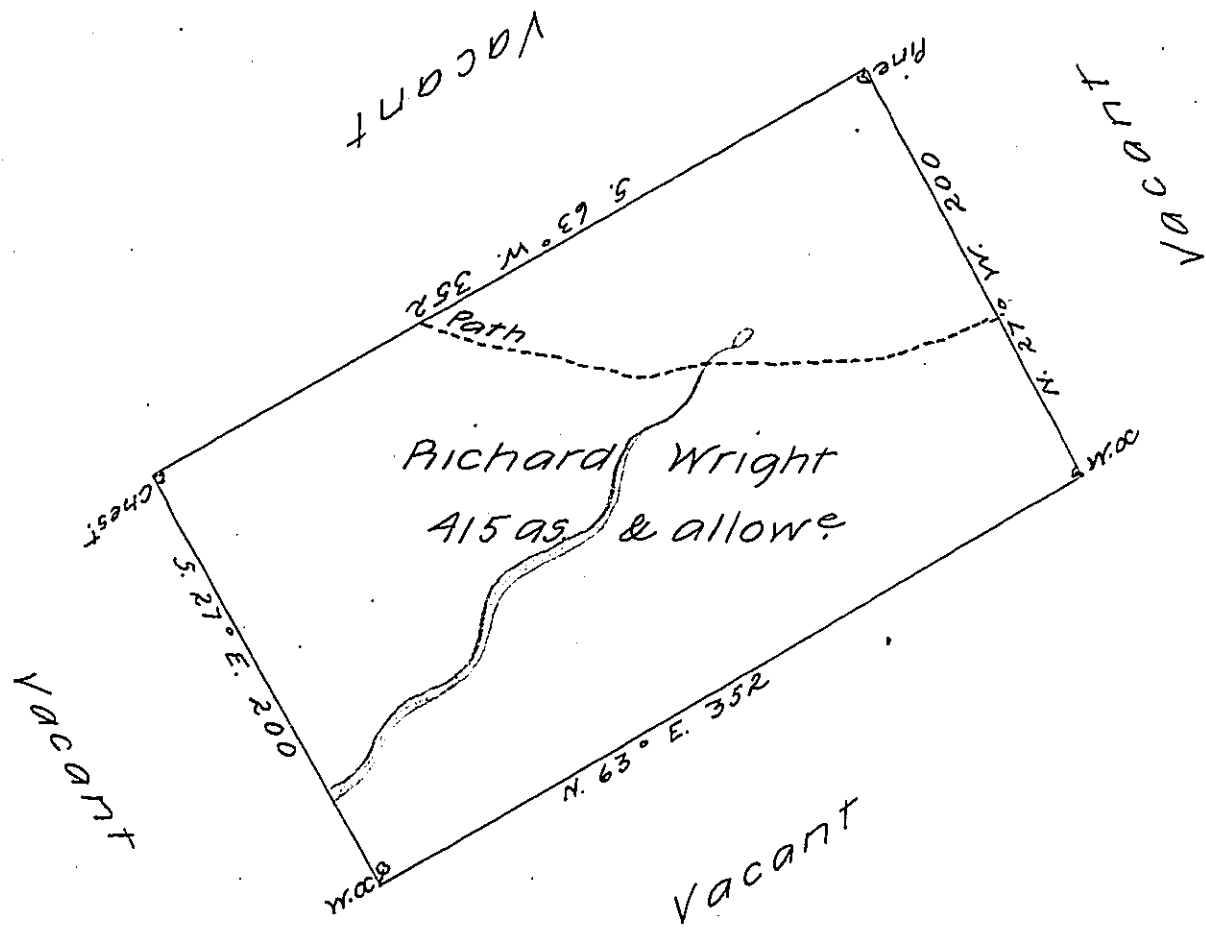


W



Draught of a tract of land Called ——— situate on the water  
of Lower Wappalopen Creek Near Land Known by the Name of  
Allens Tract in Luzerne (formerly Northumb<sup>d</sup>) County Containing  
four Hundred and fifteen acres & allowe of Six pCent for obl  
&c. Surveyed for Richard Wright the 4th Day of Nov<sup>r</sup> 1786 in  
Pursuance of a warrant Dated the 17th Day of Jan<sup>y</sup> 1785.

by Wm. Gray D.S.

To John Lukens Esqr. }  
 Survr. Genl. }

IN TESTIMONY that the above is a copy of the original remaining on file in  
the Department of Internal Affairs of Pennsylvania, made  
comformably to an Act of Assembly approved the 16th day of  
February 1833, I have hereunto set my hand and caused  
the Seal of said Department to be affixed at Harrisburg,  
this thirteenth day of May 1907

*Henry Horck*  
 Secretary of Internal Affairs.